



REV	05
Date	06-2026
Supersedes	D-EIOOC00210-21_04EN

**DHW Management
D-EIOOC00210-21_05EN**

Air to water heat pump units with scroll compressors

EWAT~CZ / EWYT~CZ

EWYE~CZ

EWAK~CZ / EWYK~CZ

EWYK-QZ

Contents

1. DOMESTIC HOT WATER	3
2. SET-UP	4
2.1 Single-Unit.....	4
2.2 Multi-Unit.....	5
3. DHW CONTROL	7
3.1 Digital Input.....	7
3.2 Analog Input.....	8
3.3 3-Way Valve.....	8
3.4 Standby Mode.....	8
3.5 Heating Customized Functionalities	8
3.5.1 Leaving Water Temperature control Target.....	9
3.5.2 Pump Secondary Fixed speed.....	9
3.5.3 Booster Heater output.....	9
3.5.3.1 <i>Activation Conditions</i>	10
3.5.3.2 <i>Deactivation conditions</i>	10
3.6 Domestic Hot Water Anti Legionella Cycle (Only for EWYE-CZ,EWYK-CZ and EWYK-QZ series).....	11
4. DHW SETUP MENU	13
4.1 DHW Anti Legionella Cycle Settings (Only for EWYE-CZ, EWYK-CZ and EWYK-QZ series)	14
5. TROUBLESHOOTING	15
5.1 3WV Fault	15
5.1.1 EWYT-CZ and EWYE-CZ series	15
5.1.2 EWYK-CZ and EWYK-QZ series.....	15
5.2 Sensor Fault.....	15
5.2.1 EWYT-CZ and EWYE-CZ series	15
5.2.2 EWYK-CZ and EWYK-QZ series.....	15
5.3 Anti Legionella Cycle Start failed (Only for EWYE-CZ, EWYK-CZ and EWYK-QZ series).....	16
5.3.1 EWYE-CZ series.....	16
5.3.2 EWYK-CZ and EWYK-QZ series.....	16

1. DOMESTIC HOT WATER

This document describes all features of DHW option for production of domestic hot water in both single and multi-chiller applications with two separated water loops, one for normal operation and one for this option.

Basic set up of the DHW control requires to set one simple parameter available in the unit configuration menu.

Notice that, for Web HMI, the Connectivity Kit is required for **EWA(Y)T-CZ and EWYE-CZ series only**.

HMI EVCO Parameters (Only EWYT-CZ and EWYE-CZ series)

Parameter	Default	Range	Description
[15.09] DHW Enable	0	0 = Disabled 1 = Enabled	After a restart of the UC the function will be enabled to start

Web/Siemens HMI Path : Main Menu → Commission Unit → Configure Unit → Options

Setpoint/Sub Menu	Default	Range	Description
Domestic Hot Water	Disable	Disable, Enable	After a restart of the UC the function will be enabled to start

2. SET-UP

In case the Domestic Hot Water option is selected, the control system is improved to manage a secondary circuit to produce domestic hot water. The water is stored in a tank and its temperature is controlled by one immersion probe. The temperature is raised by the source passing technical water in a coil inside the tank.

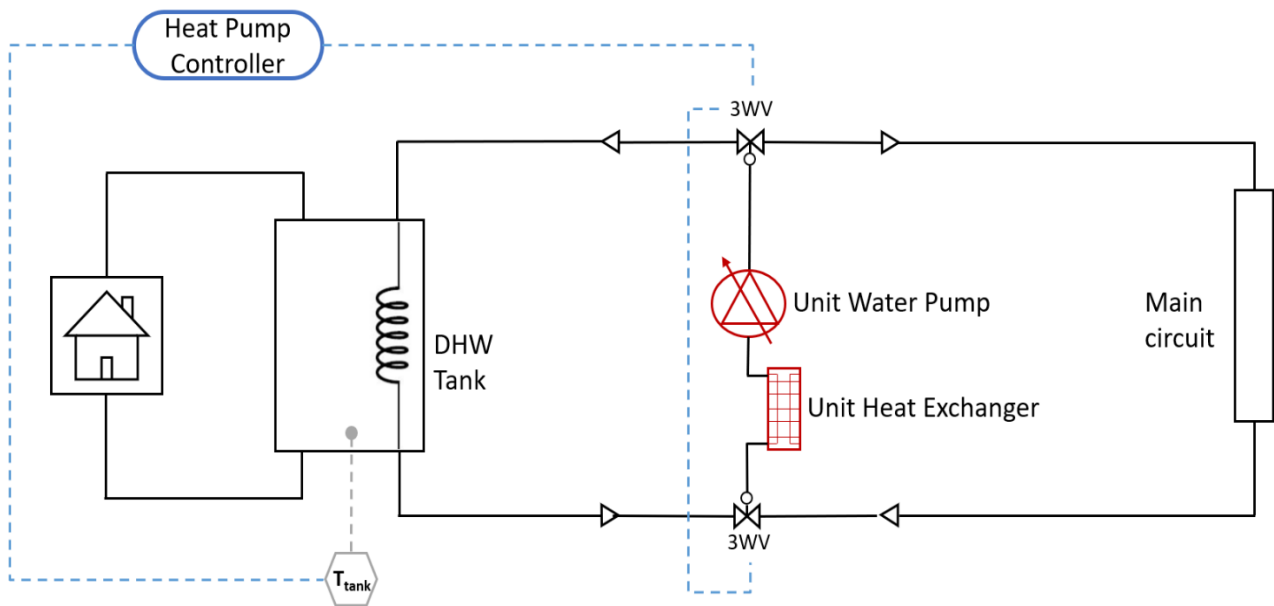
Use of the function will require the addition of the following components to the system:

- Temperature Sensor Tank
Used for monitoring the temperature of the water inside the storage tank.
- 3-Way Valve
Manages which one of the two loops (terminal or tank loop) exchanges heat with the unit in operation. 3WV default position must be the one associated with main circuit loop.

2.1 Single-Unit

This configuration temporarily stops capacity exchange with main circuit to allow water tank heating.

In this DHW system, the pump speed control must be set to “On-Off” or “Fixed Speed” (please refer to proper VPF documentation for this setting) while T_{tank} – Tank Temperature transducer must be an NTC-10K probe or 0-10V depending on series functionalities.



Please note that during DHW operation VPF functions are not allowed. Check unit configuration before start.

2.2 Multi-Unit

For Multi-Unit setup, M/S functionality needs to be enabled on all units (please refer to M/S documentation for this setting). Tank setpoint, Start Db and Delay of DHW function will follow master's parameter values. In the same way, also the 3WV and DHW functional steps are managed only by master.

For this reason, master must be physically connected to 3WV on water circuit.

In this DHW system, the pump speed control must be set to "On-Off" or "Fixed Speed" (please refer to proper VPF documentation for this setting) while T_{tank} – Tank Temperature transducer must be an NTC-10K probe or 0-10V depending on series functionalities.

Moreover, several parameters must be set to have whole the plant working properly.

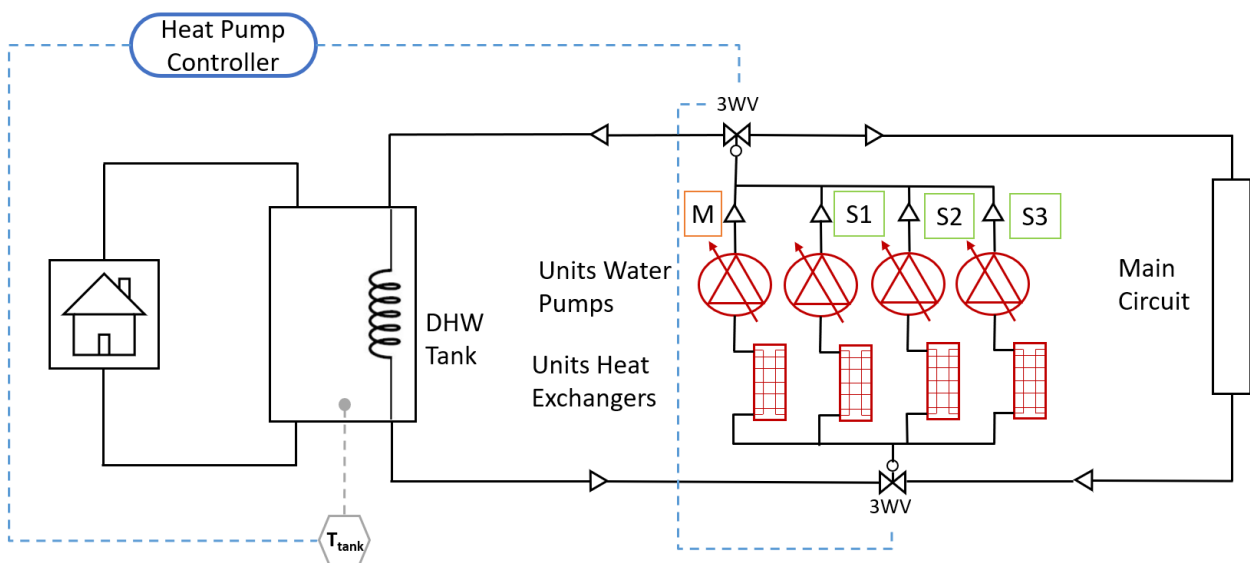
In particular:

1. DHW Enable Setpoint. Domestic Hot water function must be enabled in all units, master and slaves, that participate to the tank heating
2. Remote Enable Setpoint
Slaves units cannot have IO Ext Module and require to enable via software the DHW function. This setpoint replaces the physical digital input and must be set ON for all slaves connected to tank water circuit.
3. IO Extension Module Setpoint
The extension module must be enabled on Master unit and disabled on all Slaves units.
4. DIP Switch on Slave's IO Extension Module
If a slave has the IO Extension Module connected on Modbus network, all its DIP switches need to be set to OFF.
5. Standby Setpoint
Master and slaves connected to tank water circuit must have same the value on Standby Mode Setpoint

When M/S and DHW function are both enabled there are 2 possible cases:

a) DHW Total

All units in the plant participate to DHW function. M/S and DHW functionalities need to be enabled on all units. The following image shows a 4-units example.



DHW Total Configuration Scheme

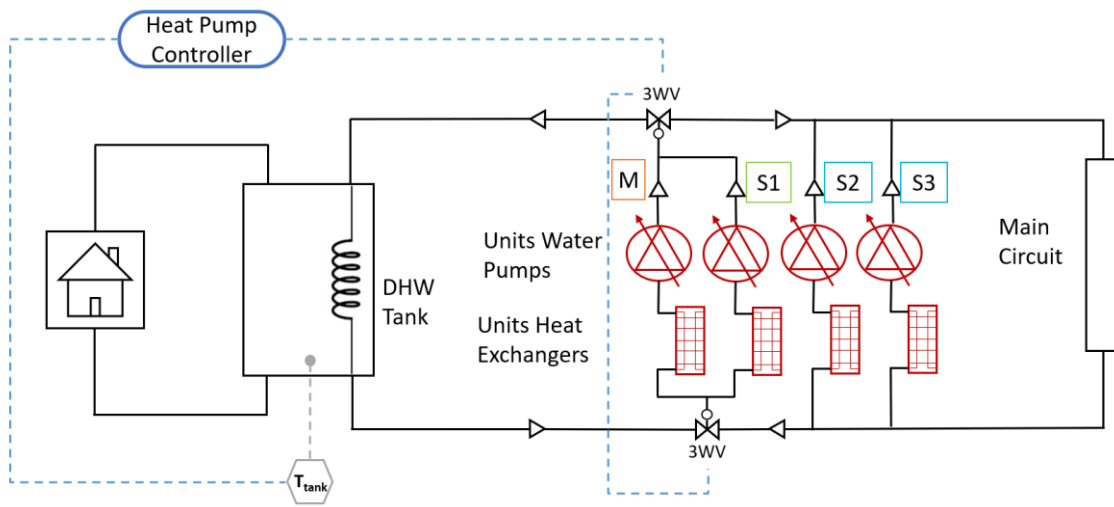
In case “(a) DHW Total”, the parameters needed for this setup can be summarized in the following table:

Unit	DHW En	Remote En	IoExtModEn	Standby En	DIP Switches
Master	On	Off	On	On/Off	Address
Slave #1	On	On	Off	On/Off***	All Off
Slave #2	On	On	Off	On/Off***	All Off
Slave #3	On	On	Off	On/Off***	All Off

***Slaves' operating in DHW must have Standby En set as master.

b) DHW Partial

Some units participate to DHW function while others are connected only to Main Circuit. This configuration allows Tank Heating and Space Heating/Cooling at the same time. The Following image shows a 4-units example with master and one slave participating to DHW functionality.



DHW Partial Configuration Scheme

In case “(b) DHW Partial”, the parameters needed for this setup can be summarized in the following table:

Unit	DHW En	Remote En	IoExtModEn	Standby En	DIP Switches
Master	On	Off	On	On/Off	Address
Slave #1	On	On	Off	On/Off***	All Off
Slave #2	Off	Off	Off	Off	All Off
Slave #3	Off	Off	Off	Off	All Off

***Slaves' operating in DHW must have Standby En set as master



Please note that unit's parameters settings must match plant configuration for both “DHW Total” and “DHW Partial”



Previous tables refer only to the examples shown in the images above.



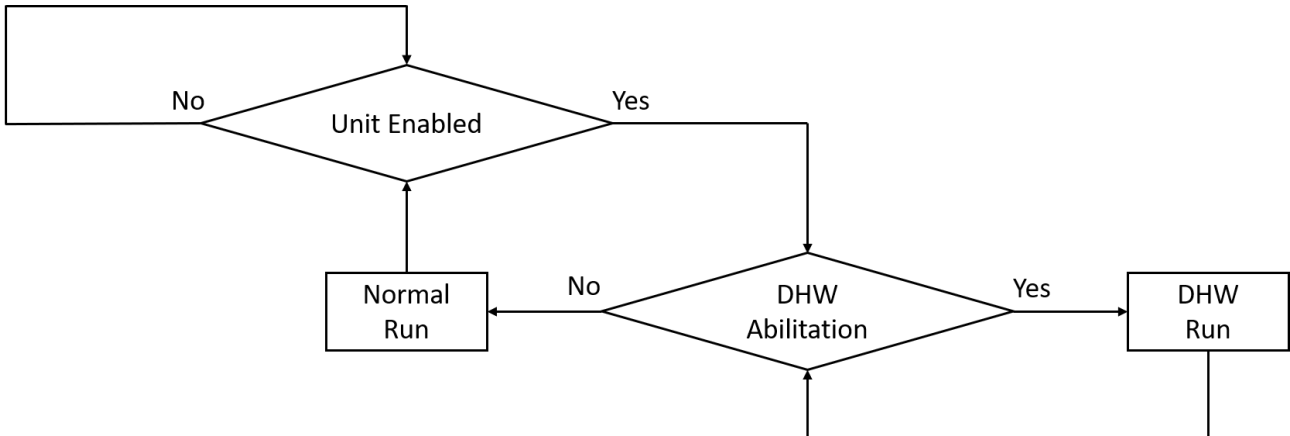
In case no modularity for EWYK-QZ, MUSE arrays should be considered as a single Master or Slave unit

3. DHW CONTROL

The production of domestic hot water takes place in "parallele" to the normal operation of the unit. When the machine is running and all DHW start conditions are reached, the unit performs the following steps:

1. Unit Pump-Down (go to 2. if Unit State = Off)
2. Water pump Shutdown
3. 3wV changeover
4. Unit Restart

Once the desired target has been reached or the DHW start conditions are no longer met, the unit will return to standard operating mode and will be restarted, as shown in the graph below:



Specifically, the following table shows the starting condition for DHW:

IF	AND	Unit Enabled	
		3wV on Main Circuit	
		DHW Enabled	
		OR	Digital Input
			BMS Input (Remote Input)
		Unit Mode Cool/Heat Pump	
		Pump Control "On-Off" or "FixSpd"	
Analog Input			
NOT		Unit Alarm	
NOT		Timer Active	
THEN	DHW Start		

Notice that in the starting conditions of the function the enabling of the unit is also present and this means that, if the unit is turned off via unit switch or enable, the 3wV will be returned to the standard position (Main Circuit Loop).

In this scenario there are two distinct inputs that enable/disable the DHW function, digital and analog, both required to go to DHW mode.

3.1 Digital Input

This input can come from an external system, a contact from a simple thermostat or overwritten via BMS/HMI.

In the digital input management, after UC activates the DHW function, the unit gradually reaches 100% capacity to satisfy the DHW request as soon as possible. When the digital input is deactivated, production of domestic hot water ends, and the unit returns to the conditions prior to the activation of the function.

- If you want to make the function dependent on the Digital Input only, it is necessary to set the maximum possible value as target of DHW. In this case, if the unit does not activate DHW mode it is because the water temperature inside the tank is above the allowed limits of the machine.

3.2 Analog Input

In this case it is an immersion probe placed inside the tank and some parameters need to be configured:

- **DHW Setpoint:** tank water temperature target
- **DHW StartDT:** activation threshold of the function below the setpoint
- **DHW Delay:** delay between two different starts of DHW function

These three parameters together with the reading of the probe placed inside the water tank (T_{tank}), determine the execution logic of the DHW function:

If $T_{\text{tank}} < \text{MIN}[\text{DHW Setpoint} - \text{DHW StartDT}, \text{Maximum HP Lwt}] \rightarrow \text{Analog Input} = \text{TRUE}$

DHW operations will terminate if this condition is no longer true.

- If you want to make the function dependent only on the Analog Input, it is necessary to short the external module associated Digital Input with GND.

3.3 3-Way Valve

The three-way valve takes care of the deviation of the water flow from the primary circuit to the tank in case of activation of the DHW function. This is automatically managed by the UC during operations. There are two different types of valves:

- **Feedback Valve**
This valve requires a digital enable input to divert the flow in one or the other direction and returns the valve start/end position via two digital outputs.
- **Temporized Valve**
This type of valve has only the digital enabling input and guarantees the complete switch at a certain time without returning feedback on the real position of the valve. Such a valve requires the configuration of a timer for switching operations.

3.4 Standby Mode

Unit can be configured to operate only on tank circuit activating a function called "Standby Mode", during which space heating/cooling is not allowed. This functionality can be activated via BMS for **EWYE-CZ, EWA(Y)K-CZ and EWYK-QZ series**.

During "Standby operations" the 3WV is always connected to Tank circuit and unit will start/stop to guarantee water tank setpoint.

- In case of Multi-Units setup, if master is configured to operate in "Standby Mode" all slaves connected to tank water circuit must have the same configuration.

3.5 Heating Customized Functionalities

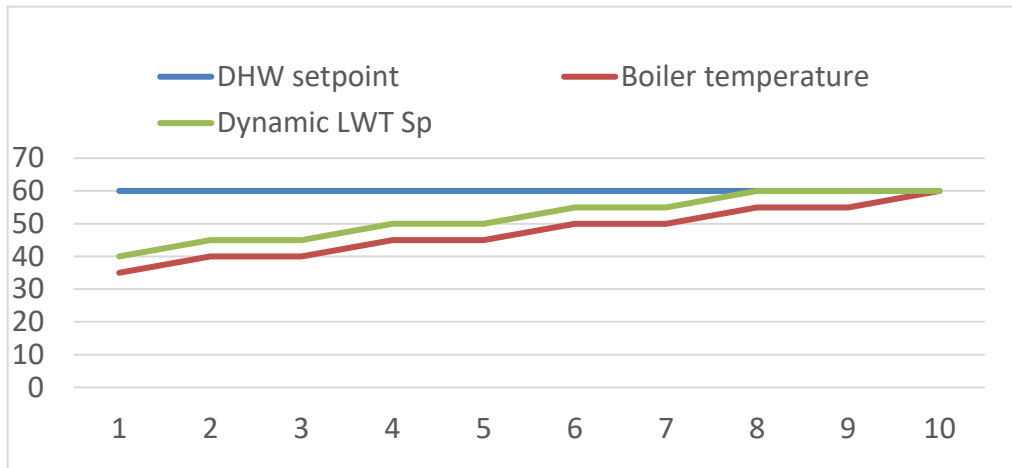
This chapter describes the feature introduced thanks to the accessory : Heating Customized for both Single-Unit and Multi-Unit cases.



NOTICE: ***Following features will be available for EWYK-QZ series as STD, only with the accessory EKRSCIOH for EWYT-CZ series, with EKRSCIOC for EWYE-CZ series or EKRSCIOR /EKRSCM (with SCM Standard) for EWYK-CZ.

3.5.1 Leaving Water Temperature control Target

During normal DHW functionalities the unit loads quickly with a target equal to its maximum leaving water temperature available in heat pump mode. It's possible to change this target forcing it to be equal to the actual water temperature inside the tank plus 5°C.



So, with “Leaving water Temperature control Target” operation, the unit will have a dynamic setpoint which will increase or decrease depending on the tank temperature in order to:

- Reduce temperature delta between leaving water temperature and tank temperature.
- Increase DHW's heat exchange efficiency.

3.5.2 Pump Secondary Fixed speed

When primary water loop and domestic hot water loop require different flows, it's possible to enable this function in order to automatically force pump to its second fixed speed during DHW operations.

- Inverter pump required.
- Fixed speed functionality enabling required (please refer to proper documentation).

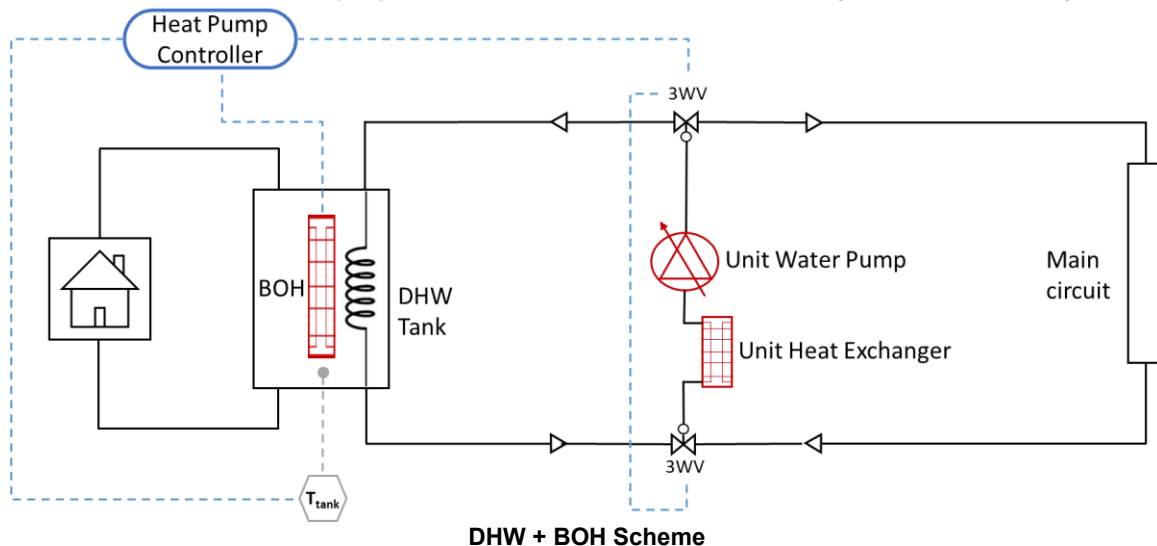
In this situation unit will use primary for main water circuit and second speed for DHW water circuit respectively.

- Both speeds need to be set via Fixed speed menu (please refer to proper documentation).

3.5.3 Booster Heater output

This function allows the generation of a dedicated output for the activation of booster heater inside water tanks in case of:

- Unit fault.
- Defrost.
- Water tank setpoint out of unit envelope.
- Excessive DHW operation time.
- EWT > Envelope Min EWT (Only for EWYE-CZ series, please refer to paragraph 3.7 of Operating Manual/OM).



3.5.3.1 Activation Conditions

Activation logic (BOH = On) can be divided into 2 different sections:

- Generic logic condition
Active even if the unit is connected to the main water circuit.

TON(10s)	OR	DHW_Sp - DHW_StartDB > TankT > MaxEnvLwtHp		
		AND	DHW_Abilitation = On	
	OR		UnitFault	SCM_DHWUnitFault

- DHW logic condition (For EWAT~CZ / EWYT~CZ series)
Active only if unit the is connected to the DHW water circuit when unit is in alarm, defrost or disconnected by comfort water loop for too much time:

OR	Gen_BOH_Alm_Defr
	Gen_BOH_MaxTime

Gen_BOH_MaxTime:

TON (DHWMaxTime/2)	AND	DHW_Regulation	
		NOT	DHwnotToAuto

Gen_BOH_Alm_Defr:

TON(10s)	OR	AND	DHWRegulation	
			OR	UnitFault
		AND	SCM_DHWUnitFault	
			OR	DefrostOn
	AND	DHWRegulation		
		OR	SCM_DHWDefrostOn	

- DHW logic condition (Only for EWYE~CZ, EWYK~CZ and EWYK~QZ series)

Active only if unit the is connected to the DHW water circuit when unit is in alarm, defrost, disconnected by comfort water loop for too much time or when EWT is greater than Envelope MIN EWT in DHW and in Anti-legionella Cycle.

OR	Gen_BOH_Alm_Defr
	Gen_BOH_MaxTime
	DHW_MinEWT
	AntiLeg_MinEWT

DHW_MinEWT:

SR	S	AND	EWT > Envelope MIN EWT
			DHW Regulation
	R	F_TRIG	DHW Regulation
		AntiLeg_MinEWT	Unit Disable

AntiLeg_MinEWT:

SR	S	AND	EWT > Envelope MIN EWT
			DHW AntiLeg Regulation
	R	F_TRIG	DHW AntiLeg Regulation
		Unit Disable	

For EWYE-CZ and EWA(Y)K-CZ series, Booster Heater (BOH) is necessary when DHW Tank Setpoint is greater than or equal to the MIN EWT value (please refer to paragraph 3.7 of Operating Manual/OM).

3.5.3.2 Deactivation conditions

Deactivation logic has a higher priority respect to activation one and can be summarized as follows.

OR	DHWTankTemp > DHWTankSp
	NOT(UnitEnabled)
	BOH = On for 30 minutes

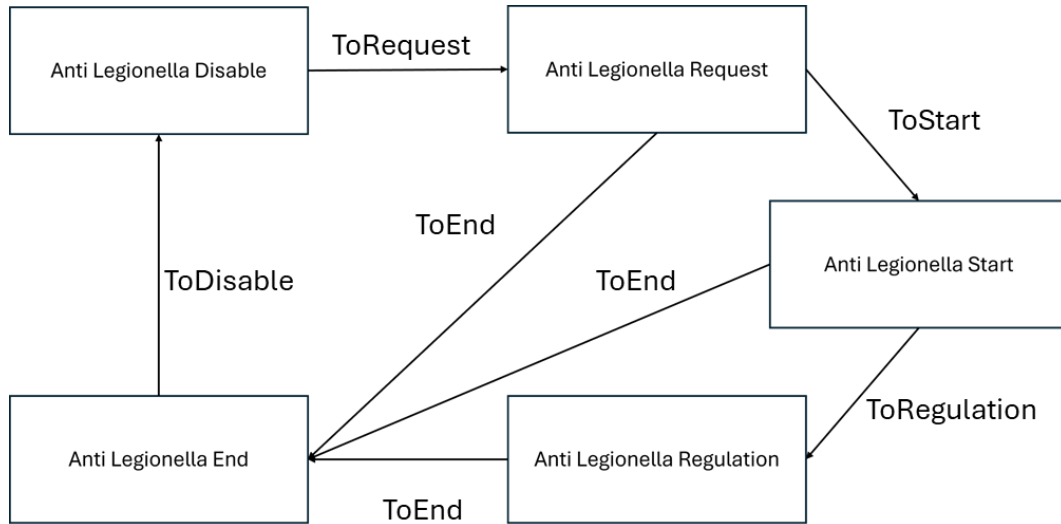
NB

- Deactivation timer is reset if BOH is activated for unit fault or defrost operation in DHW loop.
- BOH can be activated for a thermoregulation reason (no unit fault or unit defrost) only 4 time per day (one every 6 hours) for both DHW's normal and standby modes.
- EWYK-QZ is not related to MinEWT condition.

3.6 Domestic Hot Water Anti Legionella Cycle (Only for EWYE-CZ,EWYK-CZ and EWYK-QZ series)

The anti-legionella cycle functionality let the unit periodically increase his setpoint up to 70°C in order to provide maximum temperature of the domestic hot water tank to prevent the formation of legionella bacteria.

If the anti-legionella cycle does not start on the appointed day, an alarm will be displayed on the interface. This alarm does not switch off the unit.



Anti legionella cycle states are 5:

- *Anti Legionella Cycle Request (**ToRequest**)*:

Request for anti-legionella cycle on the appointed day and time.

IF	SET_AntiLeg_DI = TRUE		
THEN	AntiLeg_Start_DI		
ELSEIF	AND	NOT	DateTimeNextSwitch = DT#0001-01-01-00:00:00
		NOT	SET_DateTime
		DateTimeNextSwitch = DateTimeActual	

- *Anti Legionella Cycle Start (**ToStart**)*:

When the request occurs, if the machine is enabled and not in defrost, anti-legionella cycle starts

AND	Unit Enabled		
	AntiLeg_Reg		
	NOT	AntiLeg_AlarmTime	
	NOT	TOF (5s)	UnitDefrostOn

- *Anti Legionella Cycle Regulation (**ToRegulation**)*:

The regulation phase of the anti-legionella cycle starts when the first compressor starts.

AND	AntiLeg_Start		
	DHWRegulation		
	NOT	CirOff	

- *Anti Legionella Cycle End (**ToEnd**):*

OR	AND	OR	AntiLeg_Req
			AntiLeg_Start
			AntiLeg_Regulation
			Unit Fault
	R_TRIG		SET_AlarmTime
	TON (MaxTime)		AntiLeg_Regulation
TON (AntiLeg_CycleTime)	AND	AntiLeg_Regulation	
		DHWTemp ≥ AntiLeg_TankSp	

- *Anti Legionella Cycle Disable (**ToDisable**):*

When anti-legionella cycle is disabled, the unit can work in Heat Pump or Domestic Hot Water.

OR	NOT	UnitEnabled
	TON (5s)	AntiLeg_End

N.B. AntiLeg_AlarmTime is **TRUE** if time from cycle request reaches its maximum duration (2 hours) without start of the Anti-Legionella cycle.

4. DHW SETUP MENU

The table below reports all writable and readable parameters available in DHW Settings menu when function is enabled.

EVCO HMI Parameters (Only EWYK-CZ and EWYE-CZ series)

Menu	Parameter	Default	Range	Description
[19] DHW	[19.00] Setpoint	45	0..Max Heating Sp	Temperature target for tank water.
	[19.01] Start Db	2	0..10 °C	Allowed tank water temperature delta under setpoint before DHW function is called.
	[19.02] Delay	30	0..600min	Delay between two DHW function calls.
	[19.03] Temperature	-	°C	Actual water temperature inside tank.
	[19.04] 3wv State	-	0..1	0 = Terminal Loop 1 = Tank Loop
	[19.05] DHW Alarm Code	-	0..31	DHW Alarm word. Each bit represents: Bit_0 =Double Position Error Bit_1 =Lost Start Position Reference Bit_2 =Lost End Position Reference Bit_3 =3WV Switch Fail Bit_4 =Temperature Sensor Fault
	[19.06] 3wv Type	0	0..1	0 = Feedback 1 = Temporized
	[19.07] 3wv Switch Time	300	0..900sec	Required time for temporized valve to execute a full path switch. If 3WVs equipped with physical feedbacks are used, its value defines the alarm delay for valve reference loss.
	[19.08] Max Time	30	0..1440min	Defines maximum time during which DHW function can be active. Once elapsed this time, unit stops and 3WV is switched back on primary circuit and will not operate in DHW for at least a "Delay" time.
	[19.09] Standby Mode	0	0..1	0 = Standby Mode Disabled 1 = Standby Mode Enabled
	[19.10] Remote En	2	0..2	Represents a software function enabling that replaces digital input: 0 = Disable 1 = Enable 2 = NULL
	[19.11] Units State	-	0000..4444	Represents current DHW state of the units connected in the network: 0 = DHW Off 1 = DHW Run 2 = DHW Standby 3 = DHW Unavailable 4 = DHW Alarm
	[19.12] Lwt Target Ctrl	0	0..1	Enables the Leaving Water Temperature control target function
	[19.13] Double Fixed Speed	0	0..1	Enables the automatic pump fixed speed change during DHW operations
	[19.14] Anti Leg Period***	7	0..31	Defines the number of days to elapse between one cycle and the next
	[19.15] Anti Leg Time***	00:00	00:00...23:59	Defines the start time of the cycle
	[19.16] Anti Leg Set Cycle***	0	0..1	0 = Off 1 = On
	[19.17] Anti Leg Days Left***	-	0..31	Defines the number of days that must elapse for the cycle start
	[19.18] Anti Leg Tank Sp***	70	0..70	Defines temperature target for tank water during anti legionella cycle
[19.19] Anti Leg Cycle Time***	15	0..60	Defines maximum time during which DHW Tank Temperature is greater than or equal to Anti Leg Tank Sp	

***Only for EWYE-CZ, EWYK-CZ and EWYK-QZ series

All parameters can also be configured in Web/Siemens HMI at path:

“Main Menu -> Commission Unit -> Configure Unit -> DHW Settings”

4.1 DHW Anti Legionella Cycle Settings (Only for EWYE-CZ, EWYK-CZ and EWYK-QZ series)

Customer can choose the day and time of the start of the anti-legionella cycle by modifying parameters “Anti Leg Period” and “Anti Leg Time” and to set it customer must set the parameter “Anti Leg Set Cycle” to On.

Example. Today is 07/02/2025 and the customer wants the anti-legionella cycle to start on 15/02/2025 at 10:00 a.m. every 20 days.

If the EvCO interface is used, only for EWYE-CZ series, follow the steps reported:

1. Set [19.14] Anti Leg Period = 8 (+07/02/2025 → 15/02/2025)
2. Set [19.15] Ant Leg Time = 10:00
3. Set [19.16] Anti Leg Set Cycle = On → Anti Legionella Cycle Start: 15/02/2025, 10:00.
4. Set [19.14] Anti Leg Period = 20 (+15/02/2025 →07/03/2025 →27/03/2025 → ...)

If the Web/Siemens HMI is used, follow the steps reported:

1. Set Anti Leg Period = 8 (+07/02/2025 → 15/02/2025)
2. Set Anti Leg Time = 10:00
3. Set Anti Leg Set Cycle = On → Anti Legionella Cycle Start: 15/02/2025, 10:00.
4. Set Anti Leg Period = 20 (+15/02/2025 →07/03/2025 →27/03/2025 → ...)

5. TROUBLESHOOTING

In this section are reported all alarms related to the domestic hot water functions and relative troubleshooting. Basically, all DHW errors can be divided into different types: 3WV fault, Sensor Fault and Anti Legionella Cycle start failed.

5.1 3WV Fault

A 3WV fault can be related to connection/wiring issue or to component break up and are available only in temporized valve configuration.

5.1.1 EWYT-CZ and EWYE-CZ series

Symptom	Cause	Solution
EVCO HMI's register [07.00] report value [U016] and Bit_0, Bit_1, Bit2_ or Bit_3 of register [19.05]'s value is different from 0 Bell's led of Web HMI (Connectivity kit required) is blinking String in the alarm list: +UnitOffDHWAlarm String in the alarm log: ± UnitOffDHWAlarm String in the alarm snapshot: L UnitOffDHWAlarm	Errors in sensor wiring/connection.	Check valve's cabling. Check 3WV.

5.1.2 EWYK-CZ and EWYK-QZ series

Symptom	Cause	Solution
Bell's led of Web/Siemens HMI is blinking String in the alarm list: +UnitOffDHWAlarm String in the alarm log: ± UnitOffDHWAlarm String in the alarm snapshot: L UnitOffDHWAlarm	Errors in sensor wiring/connection.	Check valve's cabling. Check 3WV.

5.2 Sensor Fault

This alarm can occur when the sensor used to measure the water temperature into tank is broken or not properly connected to chiller.

5.2.1 EWYT-CZ and EWYE-CZ series

Symptom	Cause	Solution
EVCO HMI's bit_4 of register [19.05]'s value is different from 0 Bell's led of Web HMI (Connectivity kit required) is blinking. String in the alarm list: +UnitOffDHWAlarm String in the alarm log: ± UnitOffDHWAlarm String in the alarm snapshot: L UnitOffDHWAlarm	Errors in sensor wiring/connection.	Check sensor's cabling.

5.2.2 EWYK-CZ and EWYK-QZ series

Symptom	Cause	Solution
Bell's led of Web/Siemens HMI blinking. String in the alarm list: +UnitOffDHWAlarm String in the alarm log: ± UnitOffDHWAlarm String in the alarm snapshot: L UnitOffDHWAlarm	Errors in sensor wiring/connection.	Check sensor's cabling.

Notice that, in case of sensors fail during DHW operation, the 3WV returned in default position and normal unit operation are allowed.

5.3 Anti Legionella Cycle Start failed (Only for EWYE-CZ, EWYK-CZ and EWYK-QZ series)

This alarm does not block the unit but is a warning that the anti-legionella cycle has not started.

5.3.1 EWYE-CZ series

Symptom	Cause	Solution
EVCO HMI's register [07.00] report value [U020] Bell's led of Web HMI (Connectivity kit required) is blinking. String in the alarm list: + DHW Anti Legionella Cycle Fail	Anti legionella cycle not started	Clear alarms

5.3.2 EWYK-CZ and EWYK-QZ series

Symptom	Cause	Solution
Bell's led of Web/Siemens HMI String in the alarm list: + DHW Anti Legionella Cycle Fail	Anti legionella cycle not started	Clear alarms

The present publication is drawn up by of information only and does not constitute an offer binding upon Daikin Applied Europe S.p.A. Daikin Applied Europe S.p.A. has compiled the content of this publication to the best of its knowledge. No express or implied warranty is given for the completeness, accuracy, reliability or fitness for particular purpose of its content, and the products and services presented therein. Specifications are subject to change without prior notice. Refer to the data communicated at the time of the order. Daikin Applied Europe S.p.A. explicitly rejects any liability for any direct or indirect damage, in the broadest sense, arising from or related to the use and/or interpretation of this publication. All content is copyrighted by Daikin Applied Europe S.p.A..

DAIKIN APPLIED EUROPE S.p.A.

Via Piani di Santa Maria, 72 - 00072 Ariccia (Roma) - Italy
Tel: (+39) 06 93 73 11 - Fax: (+39) 06 93 74 014
<http://www.daikinapplied.eu>